

SP ProRoll® 20

Starter Package with IT for Parallel Roll Alignment



Content of Starter Package with IT for Parallel Roll Alignment

SP ProRoll® 20

T330 Self Levelling Sweep Laser Status Pro (BG 830203)



The T330 levelling laser makes even difficult measuring tasks easy! A laser transmitter transmits the signal and a detector measures the beam position. Done!

R525 2 axis Laser Receiver with battery charger and power supply (SP R525-P)



The R525 is a rugged but precise 2D Laser-Position detector. It was developed originally for machine tool alignment applications. Because of the Wireless interface and its versatility it is used today in a multitude of applications. In combination with the ProRoll software you measure the deviation between the reference roll/line and the roll. By measuring the distance between the roll and the laser plus the angle the result is displayed directly. When using the T250 as laser source the system is very compact and very flexible to adapt. If we use the T330 as a laser source we have a reference which automatically levels itself. These features together are very powerful and save a great deal of time on-site.

R310 Laser receiver, 2x (BG 830134)



The R310 measures the position of the rotating laser beam. The CCD Sensor has a total measurement range of 80mm. The beam forms an entire reference plane. The R310 is wireless and can measure up to a distance of 80m from the Laser.

RC310 Remote Control for T330 and R310 Monitor (BG 830930)



- Remote control for the T330
- Remote Display of current R310 values

The RC310 is of great practical use in most applications:

- for establishing reference lines in roll parallelism
- for adjusting the T330 laser position
- it saves you a great deal of shoe leather on-site

DU 320 Rugged UMPC with touchscreen (IT 200410)



Rugged UMPC for industrial on-site.

The UMPC offers protectors, shockproof design, holder for hand/arm.

- Change External Batt-Pack during use.
- Shockproof
- Water resistant

Standard accessories: IT 200207 External Li-Ion Akku.

Optional accessories: IT 200208 Extern Charging station for IT 200207

Mounting Kit for T330 (BG 830205)



Using the swivel and tilt adapter you can align the laser level, irrespective of the surface below. The Adapter also allows for a parallel movement which is very useful when aligning the laser parallel to a reference object. The Adapter is accommodated with a 5/8" thread, and is also fitted with a three-point magnet arrangement underneath.

Switch magnet with prism bottom – 60 x 50 x 55 mm – M8 – 750N (BT 943092)



Block magnet for many measuring and fixing tasks.

The upper surfaces has an M8 thread for attachment purposes.

Dimensions: 60 x 50 x 55 mm, 750 N

Block magnet complete with a cross-bridge (BG 830315)



Block magnet (BT 943092) complete with a cross-bridge. This enables the mounting of a R525 Sensor or T250 laser with adapter BG 830780. Available attachment rods: BT 948155, BT 948156, BT 948157

6x Rod, 150 mm length (BT 948157)



Attachment rod: 10 mm diameter, M8 thread enabling fixture of a sensor.

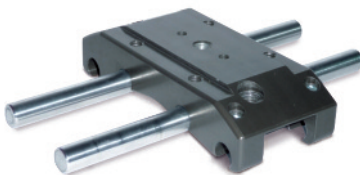
Screw adapter M8 (BT 948336)



Screw adapter with an M8 thread to enable the R310 or R280 to be mounted on different objects.

Installed adapter length: 30 mm

Roll fixture, low profile (FIX 2-0363)



This adapter is of great practical help for measuring roll parallelity. The laser receiver R525 or R280/R310 is mounted on the adapter. The rods in the profile can be mounted at the inner or outer positions for smaller or bigger rolls.

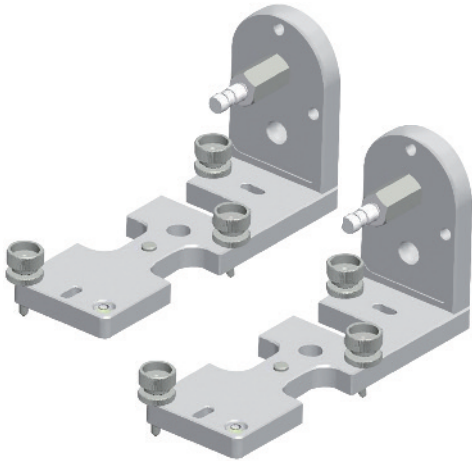
Power supply cable for T310/T330 and R310 (BG 800026)



Power supply cable for the T330 / R310 with straight plug.

12 V, 450 mA
incl. adapter

2x Floor, Wall and Tripod Adapter for R310 (BG 830119)



This adapter is of great practical help for mounting R310 in a large variety of applications.

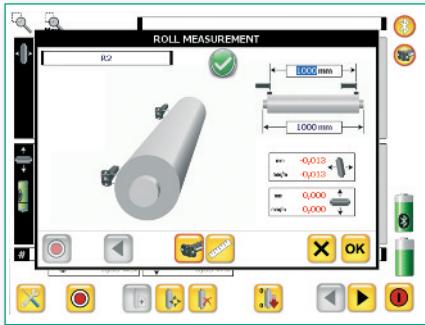
Be it simply to mount the R310 on a Tripod, make a reference point on a wall, or pickup reference floor points. This adapter can also be used to make additional parallel reference lines. This is very useful for machine assembly personnel.

Saggar measuring tape with bore holes, type 555, 10 m (BT 989047)



Special tape measure with raster holes at fixed distances to allow an exact parallel movement.
i.e. useful when moving reference lines.

ProRoll V2 Software, first license for R525 (SW 110050)



ProRoll V2 – perfect alignment of roll parallelism

- Wireless sensor interface. No Cables.
- 100s of rolls can be managed at the same time. Zoom funktion.
- Raw data, Zeroed or Best-fit feature
- Reports and measured data can be stored on a USB stick.
- Superb User Interface: Practical and Ergonomic
- A new Reference Roll or line can be chosen during the measurement
- Automatic Sensor recognition
- Extensive commenting and reporting facility
- No pen required. Touchscreen Interface
- Top end UMPC Rugged and Light

SP Laser Case, very robust, IP 65, with foam inlays (BT 990006)



Rugged Case IP65 with wheels and telescopic grip.

This case is complete with the following main foam inlays:

- BT 990010: foam inlay – top cover for BT 990008 with storage
- BT 990007: foam inlay for T330, RC310, Disto and accessories
- BT 990008: foam inlay for 3x R310, 3x BG 830119 and magnetic bases
- BT 990009: foam inlay for R5xx, DU320 and accessories

Please contact us for further informations or questions.



Status Pro Maschinenmesstechnik GmbH
Mausegatt 19
D-44866 Bochum
Telefon: + 49 (0) 2327 - 9881 - 0
Fax: + 49 (0) 2327 - 9881 - 81
www.statuspro.com
info@statuspro.com

PC 1038E 02/12 · Design / DTP: Seichter & Steffens Grafikdesign, D-44229 Dortmund.
Copyright 2012 Status Pro Maschinenmesstechnik GmbH. ProRoll® is a registered trademark and subject to trademark rights of Status Pro Maschinenmesstechnik GmbH. This document or parts thereof may not be copied or otherwise reproduced without the permission of Status Pro GmbH. The technical details are subject to change without notification.

We would appreciate being informed of any errors in this document.

Distributor