

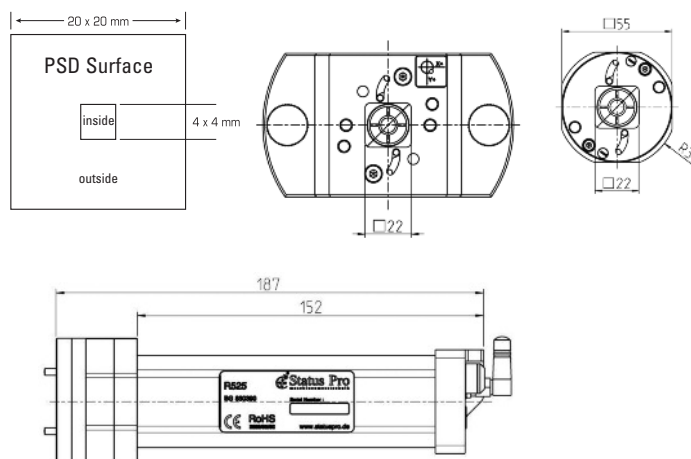
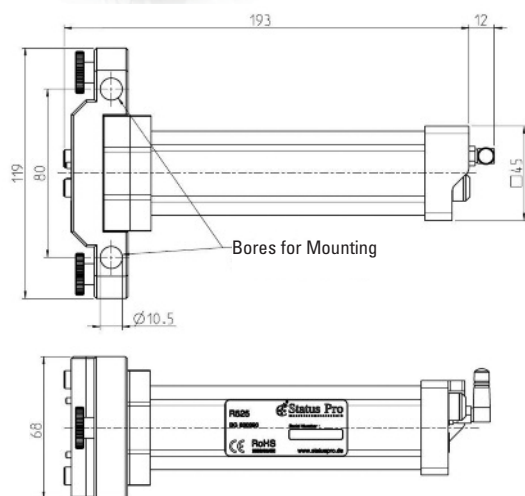
R525

Laser Receiver with PSD Technique

Part No.: BG 830390



The R525 is a rugged but precise 2D Laser-Position detector. It was developed originally for machine tool alignment applications. Because of the Wireless interface and its versatility it is used today in a multitude of applications. Together with the ProLineV2 Software application we measure XY and Z simultaneously. If we use the T330 as a laser source we have a reference which automatically levels itself. These features together are very powerful and save a great deal of time on-site.



Technical Data

Display:	Mobile Viewer MOBI V520 or UMPC	Interface:	Rs232 / Bluetooth
Sensor:	20 x 20 mm PSD	Power Supply:	Li-Ion Battery Pack, Rechargeable, 12V
Resolution:	1 μ m	Protection Class:	IP 54
Linearity inside:	0.5 %	Housing:	Aluminium, anodised
Linearity outside:	1.0 %	Weight with adapter:	720 g
Accuracy:	$\pm 2 \mu$ m + Linearity	Weight without adapter:	480 g
Laser Frequency:	650 nm / modulated	Dimensions with adapter:	120 x 68 x 205 mm
Wireless communication:	Bluetooth Class 1a (Range approx. 30m)	Dimensions without adapter:	60 x 60 x 185 mm

CE All Status Pro Laser and Receiver Instruments are developed and manufactured according to the following CE Standards: EN 55 011, EN 55 022, EN 61 000-4-2, EN 61 000-4-3, EN 60 335.

This document was prepared with the utmost of care. Changes and errors cannot be completely avoided.

TD1055 E 03/2012